

“

OUR REPUTATION HAS
BEEN BUILT ON:
BEING HELPFUL,
FORWARD THINKING,
& ABOVE ALL FLEXIBLE
TO MEET OUR CLIENTS
NEEDS

”

MARMIK

A TOTAL ENGINEERING & ELECTRICAL SOLUTIONS COMPANY

Machine Access Control System

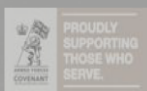
CONTACT US

3 Cedar Road, Aller Park, Newton Abbot, Devon, TQ12 4NY

01626 204636

marmikltd@btinternet.com

www.marmikcontrolsyste.ms.co.uk



M A R M I K

**WE ALWAYS PROVIDE
FOCUSED AND TARGETED
ENGINEERING SOLUTIONS
& PRODUCTS.**

Machine Access Control System

MARMIK is a **Total Engineering** and **Electrical Solutions Company** that offers Breakdown , Servicing , Installation, Relocation and parts for a wide variety of bespoke machinery that is widely used within the an Engineering or University Environment.





Potential Large Screen display in the supervisors office for situational awareness.

Human Machine Interface (HMI) screen can be mounted on each MEP for the supervisor to override or manually configure each machine.

OPTIONAL SPECIFICATIONS



A potential time restriction application is available to limit when machines can be used and by which operator.

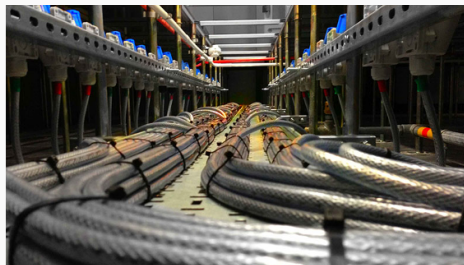
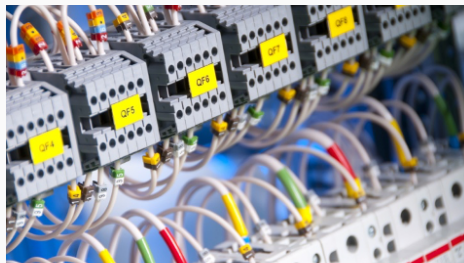
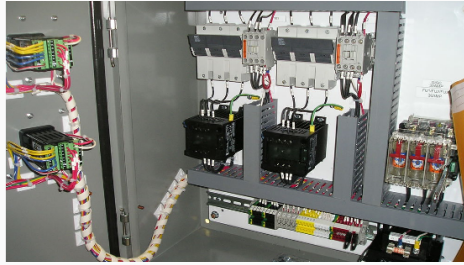
Potential WIFI enabled MEP for ease of use and security for the network or can be hard wired through your network.

The MEP will require a new mains supply for each MEP.

A DP will be installed adjacent to each machine allowing ease of use for the operator.

Each (MEP) will have Wi-Fi or a patched stable internet connection into the main panel.

THE INSTALLATION



Interconnecting cables from the MEP to the DP, will consist of networking and control system cables. Routing these cables will have to be separate from any mains infrastructure.

Optional extra emergency stop buttons can be mounted at each DP and will remove the supply to the entire room.



WHAT ARE THE BENEFITS of the *Machine Access Control System*

Granular control: which machine? which user?

Only authorised users can access a machine.

Only serviceable machines can be used.

Restrictions based on usage, user, location & serviceability.

Easily accessed service history.

Easily accessed runtime history.

Improved Health & Safety compliance.

Data evaluation on machine and user.

M A R M I K

SERVICE PACKAGE

Primary Service Package

We will visit twice per year to inspect and service the M.A.C.S (This will provide piece of mind and will be able to reduce potential downtime on your machinery).

We will provide a help desk for your M.A.C.S supervisors.

You will receive regular software updates.

Unlimited M.A.C.S users



Advanced Service Package

All of the features of the Primary Service Package are included, plus:

Next day breakdown for complete peace of mind.

WHAT ARE YOUR



Visit

Arrange a visit with MARMIK to determine your exact requirements for the installation and what machinery you want to be connected to the M.A.C.S

Estimate / Quote

MARMIK estimate will consist of the following:

Initial panel build and the installation of M.A.C.S.
Selected service package.

Costing

MARMIK will produce a detailed costing for the complete installation and will consist of routes for cables / current loading and locations for panels.